

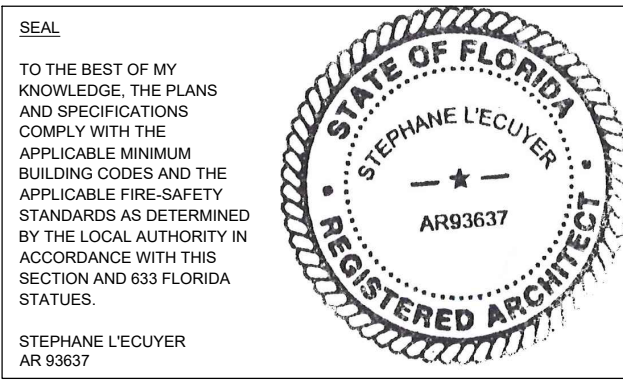
UNIT COUNT PER LEVEL	
LEVEL	COUNT
LEVEL 10	12 UNITS
LEVEL 9	20 UNITS
LEVEL 8	20 UNITS
LEVEL 7	20 UNITS
LEVEL 6	20 UNITS
LEVEL 5	20 UNITS
LEVEL 4	20 UNITS
LEVEL 3	-
LEVEL 2	-
LEVEL 1.5	-
GROUND	-
TOTAL	132 UNITS

UNITS MATRIX PER LEVEL			
NAME	TYPE	AREA	COUNT
UNIT A-1	1 BD	700 SF	02
UNIT A-1A	1 BD	725 SF	02
UNIT A-2	1 BD	690 SF	01
UNIT A-3	1 BD	750 SF	01
UNIT A-4	1 BD	635 SF	01
UNIT A-5	1 BD	620 SF	01
UNIT A-6	1 BD	650 SF	02
UNIT A-7	1 BD	640 SF	01
UNIT A-8	1 BD	660 SF	01
UNIT B-1	1 BD + DEN	900 SF	01
UNIT B-1A	1 BD + DEN	915 SF	01
UNIT B-2	1 BD + DEN	900 SF	01
UNIT C-1	2 BDS	965 SF	01
UNIT C-3	2 BDS	975 SF	01
UNIT C-4	2 BDS	990 SF	01
UNIT C-5A	2 BDS	995 SF	01
UNIT D-1	3 BDS	1,225 SF	01
TOTAL			20

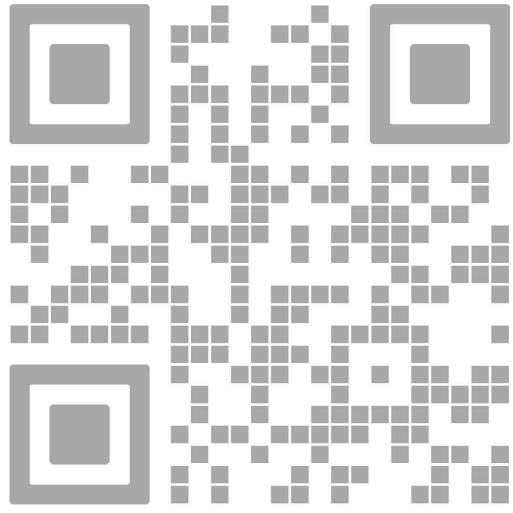
\* AFFORDABLE UNITS  
TOTAL = 20 AFFORDABLE UNITS (15% OF 132 UNITS)



**absolute-idea.com**  
CANAL PARK  
3323 NE 163rd Street, Suite 200 North Miami Beach, FL 33160  
T 305.792.0015 T 305.931.0279 @info@absolute-idea.com

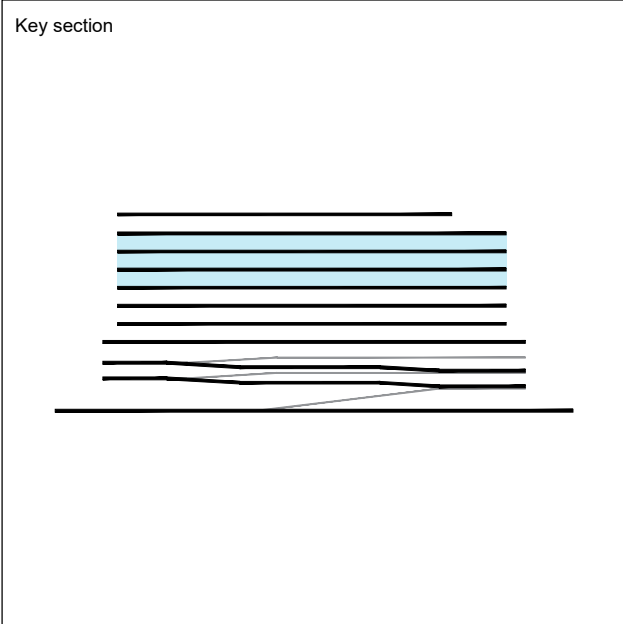


ISSUE FOR:  
**DRC SUBMITTAL**



REV.	DATE	DESCRIPTION
01	05-13-2025	D.R.C. SUBMITTAL

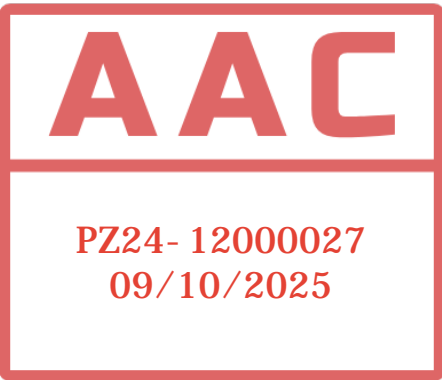
ALL MEASUREMENTS MUST BE VERIFIED BEFORE BEGINNING THE WORK. NO MEASUREMENTS ARE TO BE SCALED DIRECTLY FROM THIS DRAWING.



Client  
**VERA FUND**  
NICK POLYUSHKIN  
& YURI KHARITONENKOV  
TEL: 305.833.3303

Project  
**1600 S FEDERAL HIGHWAY**  
**(MIXED-USE PROJECT)**  
1600 SOUTH FEDERAL HIGHWAY,  
POMPANO BEACH, FL 33062

LEVEL 07-09 FLOOR PLAN LAYOUT	
Drawn <b>J. WU</b>	Field <b>ARCHITECTURE</b>
Verified <b>N. TREMBLAY</b>	Scale <b>as shown</b>
Approved <b>S. L'ECUYER</b>	Date <b>08-15-2025</b>
Project Manager <b>J. WU</b>	Dwg. no. <b>A-205</b>
Project <b>24-838</b>	



LEVEL 07-09  
TYPICAL FLOOR PLAN (X3)  
SCALE: 1"= 20'-0"